

Queensland Globe

Tips & Hints

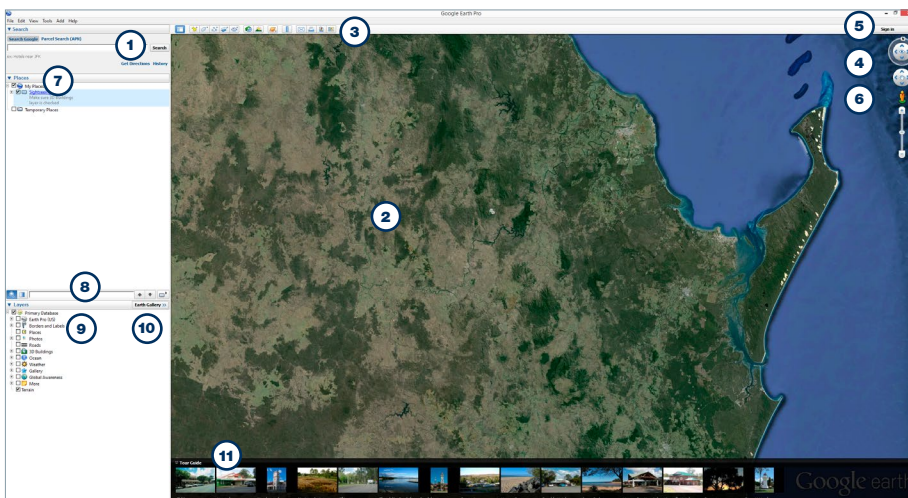
How to install Queensland Globe

- 1 **Download and Install Google Earth**
<http://www.google.com/earth/download/ge/agree.html>
- 2 **Install the Queensland Globe**
<http://dnrm.qld.gov.au/mapping-data/queensland-globe/install-mac-pc>
- 3 **If you find data that you want to know more about, visit Queensland Globe Layers:**
<http://globe.information.qld.gov.au/GlobeInformation/qldglobe.html>
- 4 **Download original data sets for further processing in a GIS from the Queensland Government Information Service:**
<http://dds.information.qld.gov.au/dds/>

Google Earth Shortcuts

- Zoom in / out**
 Mouse Wheel - Up / Down
- Rotate the view clockwise / counter-clockwise**
Shift + Click + Drag Left / Right
- Tilt view up / tilt view down**
Shift + Click + Drag Up / Down
- Point perspective to the right / to the left**
Ctrl + Click + Drag Left / Right
- Point perspective up / down**
Ctrl + Click + Drag Up / Down
- Zoom and tilt around a point**
 Right Click + Drag
- For a full list of Google Earth shortcuts see:
<http://goo.gl/UMtPTo>

Using Google Earth



- 1 **Search panel** - Find places and direction, and manage search results
- 2 **3D Viewer** - View the globe and its terrain
- 3 **Toolbar buttons**
- 4 **Navigation controls** - Use to zoom, look and move around
- 5 **Sign in with Google account** - Share what you're viewing to Google+ or email
- 6 **Street View** - Zoom in to the map then drag the pegman to view street-level imagery
- 7 **Places panel** - Use to locate, save, organise and revisit places
- 8 **Search in Places** - Find places quickly by searching for them
- 9 **Layers panel** - Use to display points of interest
- 10 **Earth Gallery** - Click to import exciting content from the Earth Gallery
- 11 **Tour Guide** - Explore interesting places around the world

What do the toolbar buttons do?

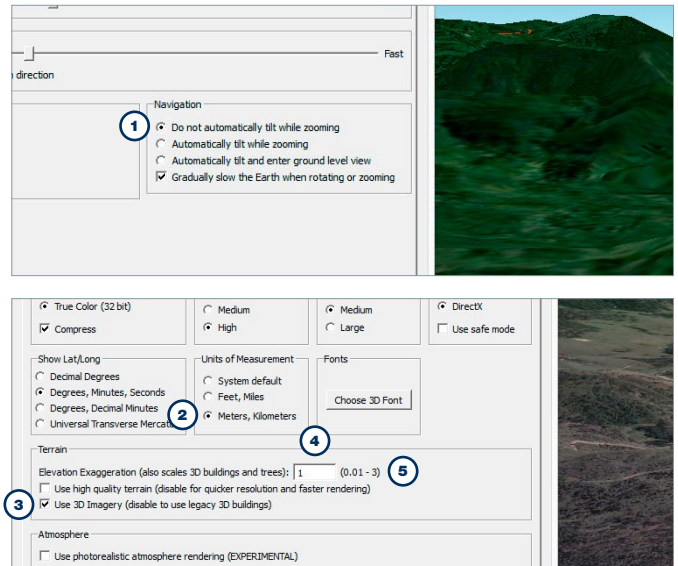
- | | |
|-------------------------------------|---------------------------------------|
| Conceal or the display the side bar | Display sunlight across the landscape |
| Add a placemark for a location | View the sky, moon and planets |
| Add a polygon | Measure a distance or area size |
| Add a path (line or lines) | Email a view or image. |
| Add an image overlay on the Earth | Print the current view of the Earth |
| Record a tour | Show the current view in Google Maps |
| Display historical imagery | |

Queensland Globe

Tips & Hints

Visual and navigation setting options

- 1 In the menu bar go to **Tools, Options**, select the **Navigation Tab** and look under the **Navigation** radio button options. Select **Do not automatically tilt while zooming**.
- 2 Select the **3D View** tab and change **Units of Measurement** to **Meters, Kilometers**.
- 3 Ensure **Use 3D Imagery** is ticked.
- 4 Set the **Elevation Exaggeration** under **Terrain** to **1** - this shows the terrain as it is in real life.
- 5 Or elevation can be exaggerated to make the differences in height stand out more - to do this, change **Elevation Exaggeration** to **1.8**.



Information Resources

- **Queensland Globe:** <http://www.dnrm.qld.gov.au/mapping-data/queensland-globe>
- **Australian Government Open Data Portal:** <http://www.data.gov.au>
- **Australian Creative Commons Licence:** <http://www.creativecommons.org/licenses/by/3.0/au/>
- **How to use Google Earth:** <http://www.wikihow.com/Use-Google-Earth>
- **DNRM Tips and Tricks:** <http://www.globe.information.qld.gov.au/kml/GlobeInformation/UsingQLDGLOBE.htm>
- **DNRM Recommended Settings:** <http://www.dnrm.qld.gov.au/mapping-data/queensland-globe/recommended-settings>
- **QGIS:** <http://dds.information.qld.gov.au/dds/>

Show an elevation profile

- 1 To start, either draw a path or open an existing one and then choose your path from the Places panel.
- 2 Either go to **Edit > Show Elevation Profile**, or right-click on your path from the **Places** panel and select **Show Elevation Profile**.
- 3 You can now view a variety of additional measurement details such as slope, elevation, speed and overall statistics.

